



Felix F. de Crano, Marshes and St. Augustine Skyline, 1893

ST. AUGUSTINE IN A NEW LIGHT

# THEN + NOW WALKING TOUR

This stroll through historic downtown Saint Augustine visits locations that inspired paintings in the Lightner Museum exhibition, *St. Augustine in a New Light: American Impressionism* from the Collection of the Lightner Museum.

The walking tour takes 1-1 ½ hours, excluding the many other historic sites, attractions, quaint shops, and restaurants that may entice you along the way.

Post your photos of modern St. Augustine online with the hashtag [#lightnermuseum](#).

## LIST OF PAINTINGS AND DIRECTIONS



### STOP 1

FELIX F. DE CRANO (FRENCH-AMERICAN, 1839-1908)  
COURTYARD OF THE HOTEL ALCAZAR, 1903

Exit through Museum Lobby into the courtyard.

Walk to the entry gate and look back to see the Courtyard from de Crano's viewpoint.



### STOP 2

FELIX F. DE CRANO (FRENCH-AMERICAN, 1839-1908)  
KING STREET LOOKING EAST, 1903

Exit the Alcazar Building and turn left (west) on King Street. Walk to Markland Place.

Look back to see the Casa Monica Hotel (formerly Cordova Hotel). Unfortunately, the original view of the depicted scene is from the middle of King Street. Viewing from this location is not advised.

Instead, walk back in the direction of the Lightner Museum and identify characteristics seen in the painting that remain today.



### STOP 3

FRANK H. SHAPLEIGH (AMERICAN, 1842-1906)  
IN HOSPITAL STREET, ST. AUGUSTINE, 1890

Continue East on King Street, until you reach Aviles Street.

Turn right on Aviles Street and walk to the pink building at 21 Aviles Street (now the Casa de Solana Inn). The view of Aviles Street in the painting lies ahead of you.



## LIST OF PAINTINGS AND DIRECTIONS (CONT.)



### STOP 4

HARRY L. HOFFMAN (AMERICAN, 1871-1964)  
FATIO HOUSE KITCHEN, ST. AUGUSTINE, 1904

On your right, beyond the wooden fence is the Ximenez-Fatio House.

The kitchen is detached from and behind the main house. The door and window seen in the painting are now white.



### STOP 5

WILLIAM STAPLES DROWN (AMERICAN, 1856-1915)  
CHARLOTTE STREET, ST. AUGUSTINE, 1890

Head south to Cadiz Street. Make a left (east) on Cadiz Street.

Turn left onto Charlotte Street and head north toward King Street.

Stop at 200 Charlotte Street and look back.



### STOP 6

FRANK H. SHAPLEIGH (AMERICAN, 1842-1906)  
ST. GEORGE STREET, ST. AUGUSTINE, 1892

Head north. Cross King Street and walk across the Plaza.

Head west toward St. George Street. Turn right onto St. George Street and head north.

Walk past the Pena Peck House at 143 St. George Street and cross Treasury Street.

Look back above the rooftops for the spire of the Basilica.

## LIST OF PAINTINGS AND DIRECTIONS (CONT.)



### STOP 7

GUSTAVE ADOLPH HOFFMAN (GERMAN-AMERICAN, 1869-1945)

CHARLOTTE STREET, ST. AUGUSTINE, 1905

Continue walking north on St. George Street to Hypolita Street. Turn right and head east toward Charlotte Street.

Look south from the corner of Charlotte and Hypolita. Note the second story balconies.



### STOP 8

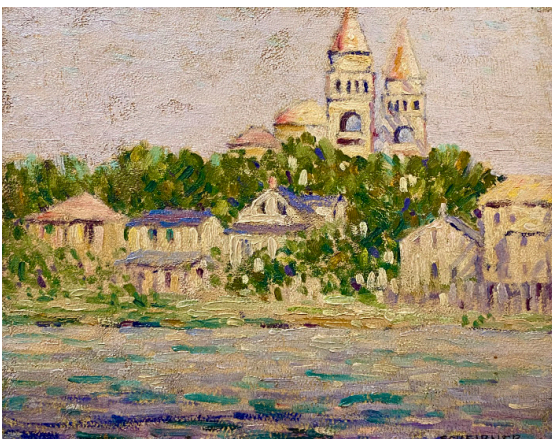
ABBOTT FULLER GRAVES (AMERICAN, 1859-1936)

TOURISTS AT FORT MARION, ST. AUGUSTINE, 1900

Continue east on Hypolita Street. Cross Avenida Menendez/ Castillo Drive.

Head north to the Castillo de San Marcos (formerly Fort Marion).

Walk around the sea wall to find the tower.



### STOP 9

VIRA SCHEIBNER (AMERICAN, 1889-1956)

ST. AUGUSTINE SKYLINE, CA. 1930

Exit the grounds of the Castillo. Head south to the Bridge of Lions.

Use the pedestrian walkway on the bridge to reach the midpoint.

Look back for a view of the St. Augustine skyline.